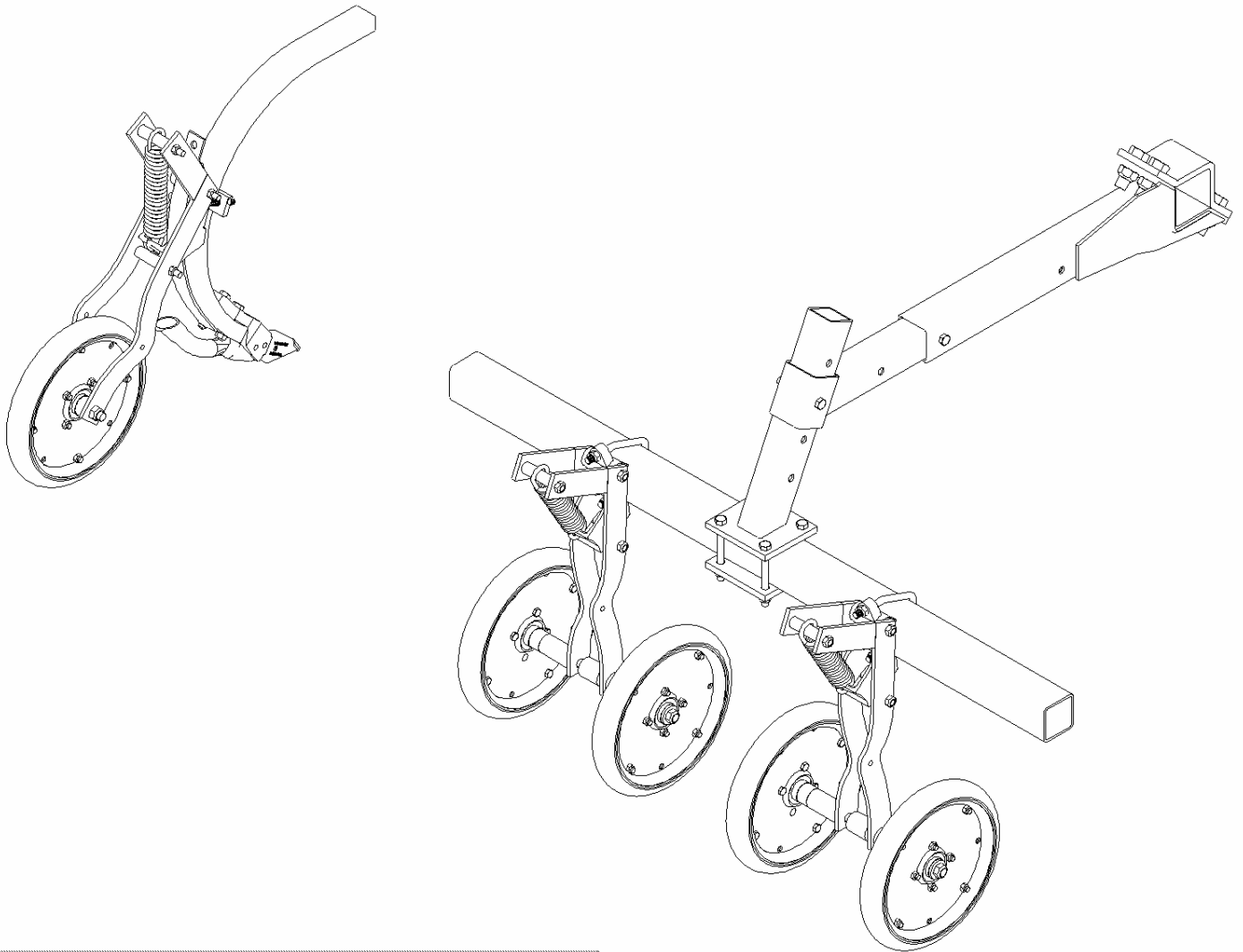


# OWNER'S MANUAL FOR THE DUTCH PACKER WHEEL SYSTEM



Manufactured By:  
**DUTCH INDUSTRIES LIMITED**

PORTICO DRIVE  
P.O. BOX 568  
PILOT BUTTE, SASKATCHEWAN  
CANADA, S0G 3Z0  
[www.dutchind.com](http://www.dutchind.com)

Phone: (306) 781-4820  
Fax: (306) 781-4877  
Toll Free: 1-800-663-8824

DATE: Dec 01, 2002

Part # 60150

## **TABLE OF CONTENTS**

Introduction .....	Page 1
General Safety .....	Page 1
Safety Instructions.....	Page 2
Getting Started .....	Page 2
Initial Set Up .....	Page 2
Shank Mount Packer - Installation Instructions .....	Page 3
60000 Assembly Drawing and Parts List.....	Page 4
60002 Assembly Drawing and Parts List.....	Page 5
60135 Assembly Drawing and Parts List.....	Page 6
60113 Assembly Instructions .....	Page 7
Independent Mount Packer – Installation Instructions .....	Page 8,9
6766 Assembly Drawing and Parts List.....	Page 10
6765 Assembly Drawing and Parts List.....	Page 11
Gang Mount Packer - Installation Instructions.....	Page 12,13
Gang Mount Kits (List of Part Numbers).....	Page 13
60013 Assembly Drawing and Parts List.....	Page 14
60031 Assembly Drawing and Parts List.....	Page 15
5350 Assembly Instructions .....	Page 16
60112 Assembly Instructions .....	Page 17
Warranty and Important Notice .....	Back Cover

# ***INTRODUCTION***

This manual is intended to assist you in the assembly, operation and maintenance of the Dutch Packer Wheel System. Read and follow all instructions and safety precautions carefully.

There are three main categories of this product. They are identified by the way in which they are mounted to your toolbar. Within these main categories are many different wheel spacing, sizes and options available. All of the Dutch Packer Wheel Systems are used in conjunction with a toolbar.

If any further information or assistance is required, contact your local Dutch Products Dealer.

## ***GENERAL SAFETY***

Occupational safety is of prime concern to Dutch Industries Ltd. This manual was written with the safety of the operator and others who come into contact with the equipment as our prime concern. This manual entails the safety, assembly, operation and maintenance encountered by the operator and other personnel. We wrote this manual to help you understand safe operating procedures. We want you as a partner in the safe operation of our products.

It is your responsibility as an owner or operator or supervisor, to know what specific requirements, precautions and work hazards exist and to make these known to all other personnel working with the equipment or in the area, so that they may take any necessary safety precautions that may be required.

Failure to read this manual and its safety instructions is a misuse of the product.

# ***SAFETY INSTRUCTIONS***

1. Do not operate this unit unless you have read the operators manual.
2. Never allow this product to be operated by anyone who is unfamiliar to the operations of this unit.
3. Never permit anyone near unit when in operation.
4. Use caution when working with heavy or sharp objects.
5. Ensure that proper clothing, tools and equipment are used when handling this unit.
6. Ensure that all hardware is fastened properly.
7. After installation, ensure that all tools and parts are removed before operation of this unit.
8. Failure to follow safety rules may result in injury or death.
9. Ensure that you stay clear of pinch points and block up any equipment that could possibly fall.

## ***GETTING STARTED***

The Tools and Material required are as follows:

1/2" Socket Set / 1/2" Impact Socket Set  
9/16", 3/4", 15/16", Open Ended Wrenches  
6" Adjustable Wrench (Crescent Wrench)  
1/2" Impact Wrench (Optional)  
Hammer

Suggested Torque for sizes of bolts and nuts are as follows:

3/8"	30 ft. lb.
1/2"	75 ft. lb.
5/8"	100 ft. lb.

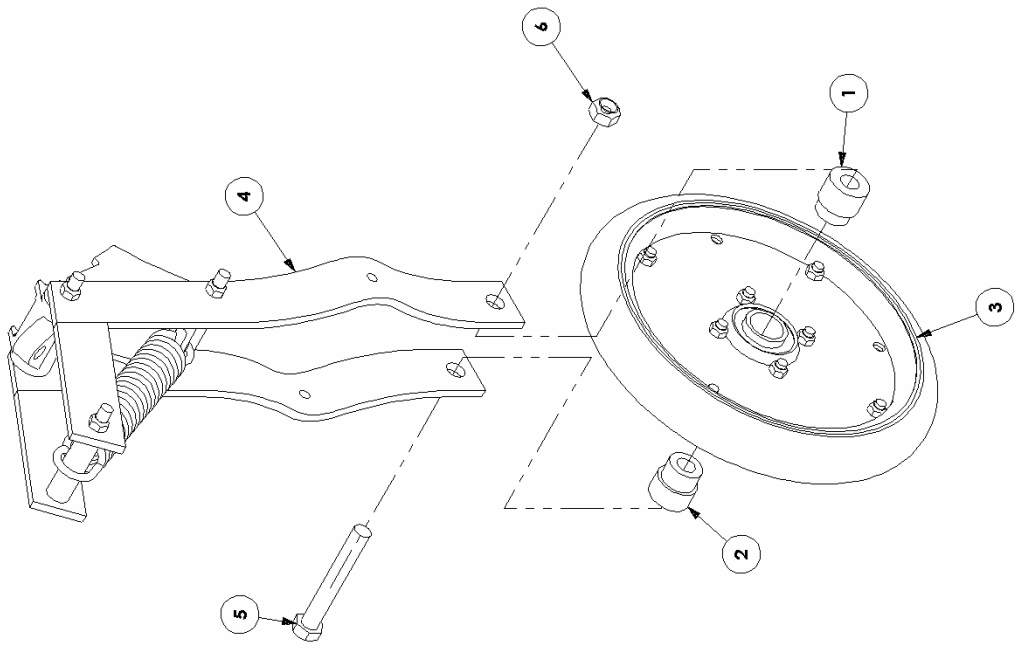
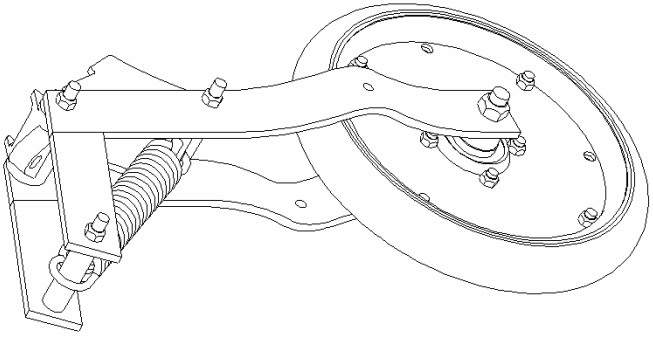
## ***INITIAL SET UP***

When you receive your quality Dutch Product, the customer should unpack all components to ensure that all parts have been shipped. Refer to respective drawing for listing. Once the quantities are confirmed, proceed to your site. Be sure to bring the tools listed above.

# **SHANK MOUNT INSTALLATION INSTRUCTIONS**

**Refer to Page 4 unless otherwise noted**

1. The instructions below are for the 2" single shank mount packer wheel. There are other models shown on page 5 and 6. The assembly of these models are very similar to the 2" model. Use these instructions for all models.
2. Slide Packer Bushings (Item 1 and Item 2) into Packer Wheel Bearing (Item 3).  
  
Note: For the 6" Packer Wheel (Page 6) also use washers. See drawing.
3. Slide Packer Wheel with Packer Bushings in between the Flat bars of the Packer Assembly (Item 4).
4. Slide Bolt (Item 5) through Item 4, Item 2, Item 3, and Item 1.
5. Screw Cleave nut (Item 6) onto Bolt (Item 5).
6. Tighten all bolts to the proper Torque Specifications.
7. Now Refer to Page 7 for installation of Packer Wheel assembly to the Shank.
8. Loosely fit The Packer Wheel to the Shank, using the mounting plate (Item 1), U-bolt (Item 2), and 7/16" Cleave Nuts (Item 5)
9. Bolt Height Adjustment Strap (Item 3) to the shank, using the rear bolt of opener that is bolted to the shank.
10. Slide Packer Wheel up, so that it is approximately 1" below the level that the opener first touches the ground.
11. Bolt Height Adjustment Strap (Item 3) to the packer wheel assembly, using 1/2" x 1 1/2" Hex Bolt (Item 4) and 1/2" Flange Nut (Item 6). Use the hole that is closest to the 1" initial setup measurement.
12. Tighten all bolts to the proper Torque Specifications.
13. Test in the field to determine if this meets your packing pressure needs. If there is too much pressure, move the packer wheel assembly up to a higher hole in the height adjustment strap. If there is not enough packing pressure, move the packer wheel assembly down to a lower hole in the height adjustment strap.



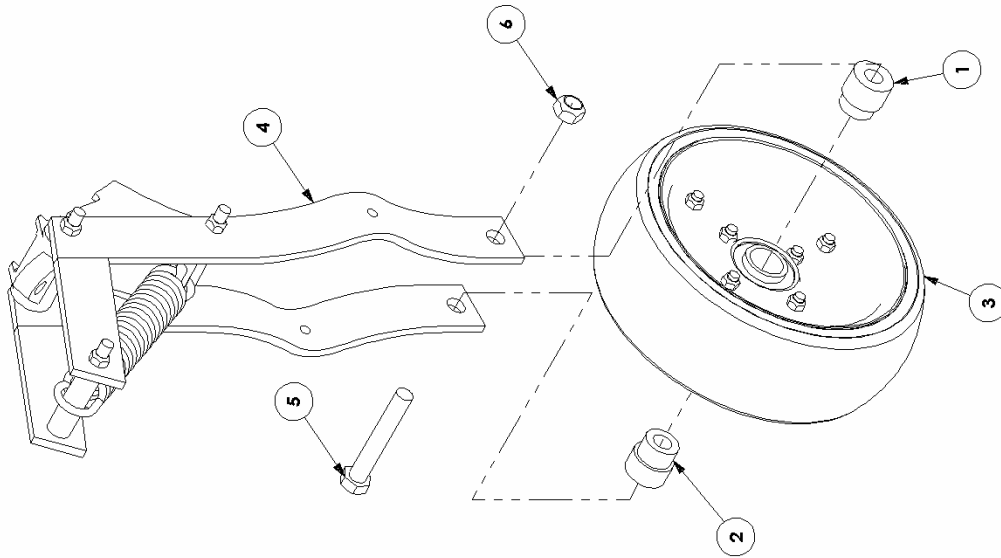
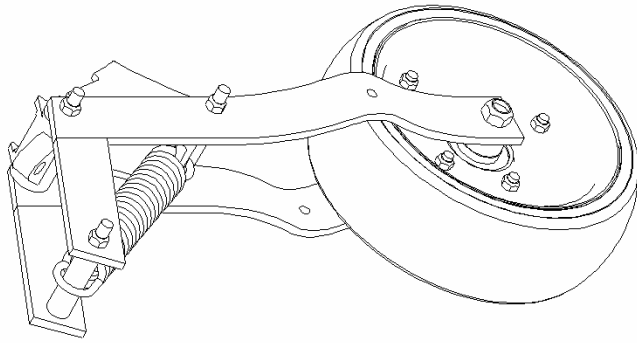
ITEM	QTY.	PART NO.	DESCRIPTION
6	1	CN58PL	CLEAVE NUT, 5/8"
5	1	HH69412PLC5	HEX BOLT, 5/8 x 4 1/2"
4	1	60115	2" Single Packer Assy - No Wheel
3	1	60068	2" Single Wheel Packer Assm.
2	1	60067	Packer Bushing
1	1	60055	Packer Bushing

**PARTS LIST**

THIS DRAWING IS THE PROPERTY OF:  
**DUTCH INDUSTRIES LIMITED**  
 ALL RIGHTS RESERVED

DRAWN BY: BC      DESCRIPTION: 2" Single Wheel Packer Assembly  
 DATE CREATED: NOV 01/02      MATERIAL: As Per BOM  
 TOLERANCES: ±1/16"      PROCESS: Assemble  
 SCALE: 1:6      **PART #: 60000**

NOTES:



ITEM	QTY	PART NO.	DESCRIPTION
6	1	CN58PL	CLEAVE NUT, 5/8
5	1	HH684PLC5	HEX BOLT, 5/8 x 4
4	1	60115	2" Single Packer Assy - No Wheel
3	1	60069	4" Single Packer Wheel Assm.
2	1	60067	Packer Bushing
1	1	60055	Packer Bushing

**PARTS LIST**

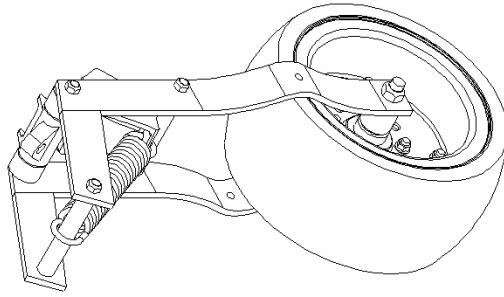
THIS DRAWING IS THE PROPERTY OF:

**DUTCH INDUSTRIES LIMITED**

ALL RIGHTS RESERVED

DRAWN BY: BC	DESCRIPTION: 4" Single Packer Wheel Assembly
DATE CREATED: NOV 01/02	MATERIAL: As Per BOM
TOLERANCES: ±1/16"	PROCESS: Assemble
SCALE: 1:6	<b>PART #: 60002</b>

NOTES:

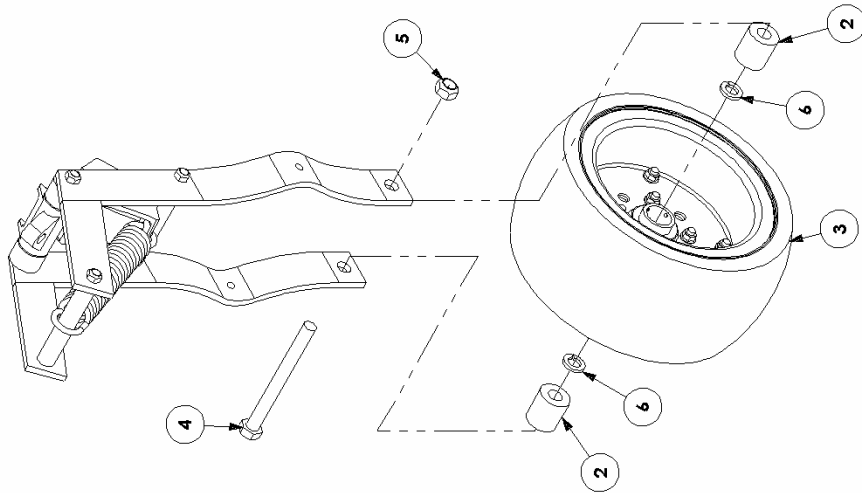


ITEM	QTY.	PART NO.	DESCRIPTION
6	2	LW58PL	LOCK WASHER, 5/8, PLATED
5	1	CN58PL	CLEAVE NUT, 5/8
4	1	HH58612PLC5	HEX BOLT, 5/8 x 6 1/2
3	1	110725	6" PACKER WHEEL ASSEMBLY
2	2	60051	1 5/8" Spacer
1	1	60138	6" Single Packer Assy - No Wheel

**PARTS LIST**

THIS DRAWING IS THE PROPERTY OF:  
**DUTCH INDUSTRIES LIMITED**  
 ALL RIGHTS RESERVED

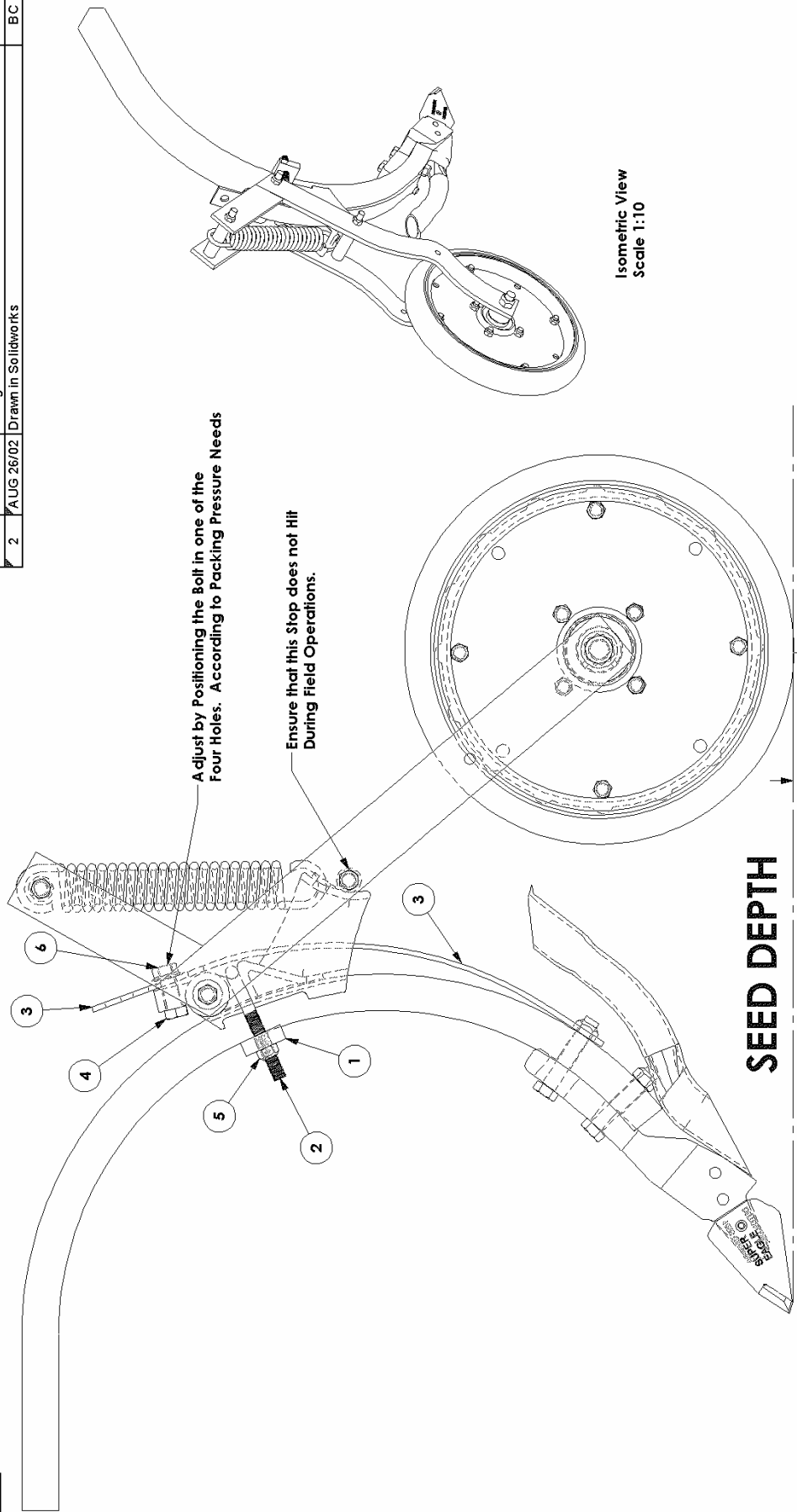
DRAWN BY: BC      DESCRIPTION: 6" Single Packer Wheel Assy  
 DATE CREATED: NOV 04/02      MATERIAL: As Per BOM  
 TOLERANCES: ±1/16"      PROCESS: Assemble  
 SCALE: 1:8      **PART #: 60135**



NOTES:



REV #	DATE	REVISION	REV BY
1	NOV 70/01	Changed Note	BC
2	AUG 26/02	Drawn in Solidworks	BC



Isometric View  
Scale 1:10

## CAUTION

1. ENSURE THAT THIS PRODUCT IS COMPATIBLE WITH THE EQUIPMENT IT WILL BE MOUNTED ON OR POWERED BY.
2. ASK FOR APPROVAL PROCEDURES FROM YOUR DEALER TO AVOID COSTLY MISTAKES OR VOIDING OF YOUR WARRANTIES.

## WARNING

1. DO NOT OPERATE THIS UNIT UNLESS YOU HAVE READ THE OPERATOR'S MANUAL.
2. NEVER ALLOW THIS PRODUCT TO BE HANDLED BY ANYONE WHO IS UNFAMILIAR TO THE OPERATIONS OF THIS UNIT.
3. NEVER PERMIT ANYONE NEAR UNIT WHEN IN OPERATION.
4. USE CAUTION WHEN WORKING WITH HEAVY OR SHARP OBJECTS.
5. ENSURE THAT PROPER CLOTHING, TOOLS AND EQUIPMENT ARE USED WHEN HANDLING THIS UNIT.
6. ENSURE THAT ALL HAZARDOUS IS FASTENED PROPERLY.
7. NEVER ALLOW CHILDREN TO OPERATE THIS UNIT. TOOLS AND PARTS ARE REMOVED BEFORE OPERATION OF THIS UNIT.
8. FAILURE TO FOLLOW SAFETY RULES MAY RESULT IN INJURY OR DEATH.

ITEM	QTY.	PART NO.	DESCRIPTION
6	1	FN12PL	FLANGE NUT, 1/2"
5	2	CN716PL	CLEAVE NUT, 7/16"
4	1	HH12112PLC5	HEX BOLT, 1/2 x 1 1/2"
3	1	60133	Height Adjustment Strap
2	1	60066	U-Bolt - Shank Mount
1	1	60065	Mounting Plate

THIS DRAWING IS THE PROPERTY OF:  
**DUTCH INDUSTRIES LIMITED**  
ALL RIGHTS RESERVED

DESCRIPTION: Shank Mount Linkage - Insi. Sheet

DRAWN BY: BC

DATE CREATED: AUG 26/02

MATERIAL: N/A

TOLERANCES: ±1/16"

PROCESS: N/A

SCALE: 1:5

**PART #:** 60134

## INSTRUCTION SHEET FOR PART # 60113

## SEED DEPTH

NOTES:

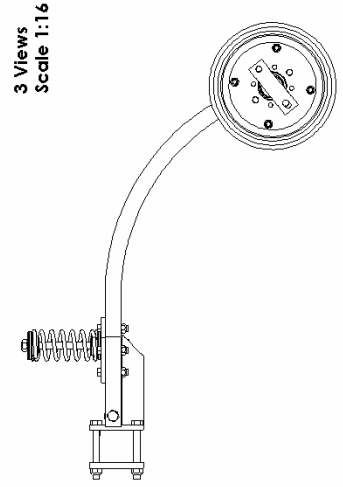
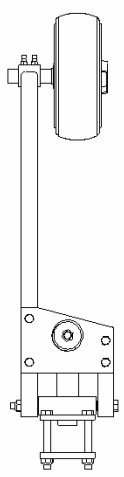
# **INDEPENDANT MOUNT (SINGLE WHEEL) INSTALLATION INSTRUCTIONS**

**Refer to Page 10 unless otherwise noted**

1. Press Plastic Bushing (Item 8) into Shank Mount Packer Mount (Item 2). A press or hammer may be used to achieve this. The factory reams these installed bushings to have 0.060" Clearance.
2. Insert Pivot (Item 5) inside the Plastic Bushings (Item 8) which have just been pressed and reamed into Item 2.
3. Bolt the Packer Arm (Item 1), the Packer Brace (Item 4), and the Shank Mount Packer Mount (Item 2) together. Make sure that Item 5 is inside Item 2. Use a 5/8" x 9 1/2" Hex Bolt (Item 15), and a 5/8" Cleave Nut (Item 18). DO NOT tighten this bolt completely.
4. Bolt Packer Plate (Item 3) to the Packer Arm (Item 1) and Packer Brace (Item 4). Use 1/2" x 2 1/2" Hex Bolts (Item 14), and 1/2" Cleave Nuts (Item 19). Tighten as per correct torque values.
5. Now tighten the 5/8" x 9 1/2" Hex Bolt (Item 15) that was installed in Step #3.
6. Insert 5/8" x 8" Hex Bolt (Item 16) into Packer Plate (Item 3). Slide Spring Guide (Item 7), spring (Item 12), and Spring Retainer Washer (Item 6) onto Bolt, in the order that is shown on the assembly drawing.
7. Tighten Spring Assembly. Tighten so that the 5/8" Cleave Nut is flush to the end of the 5/8" x 8" Hex Bolt. This will set the Packer Wheel at approximately 100lbs pressure. After testing the product in the field, this packing pressure can be increased if deemed necessary.
8. Bolt Spindle (Item 13), 4" Packer Wheel Assembly (Item 10), and Packer Cap Retainer (Item 11) together.
9. Insert Packer Wheel Assembly (Item 10, 11, 13) into Packer Arm (Item 1).
10. Screw 3/8" Hex Nut (Item 21) onto 3/8" x 1" Set Screw (Item 20).
11. Screw 3/8" x 1" Set Screw and 3/8" Hex Nut (Item 20, 21) into Packer Arm (Item 1). DO NOT tighten the set screw yet.
12. Bolt the entire assembly onto the toolbar using the Packer Mount Plate (Item 9), the 5/8" x 4" Hex Bolts (Item 17), and the 5/8" Cleave Nuts (Item 18). Do not tighten bolts until the entire assembly is as close to your shank as possible without interfering with its motion. Once in the proper position, tighten bolts.

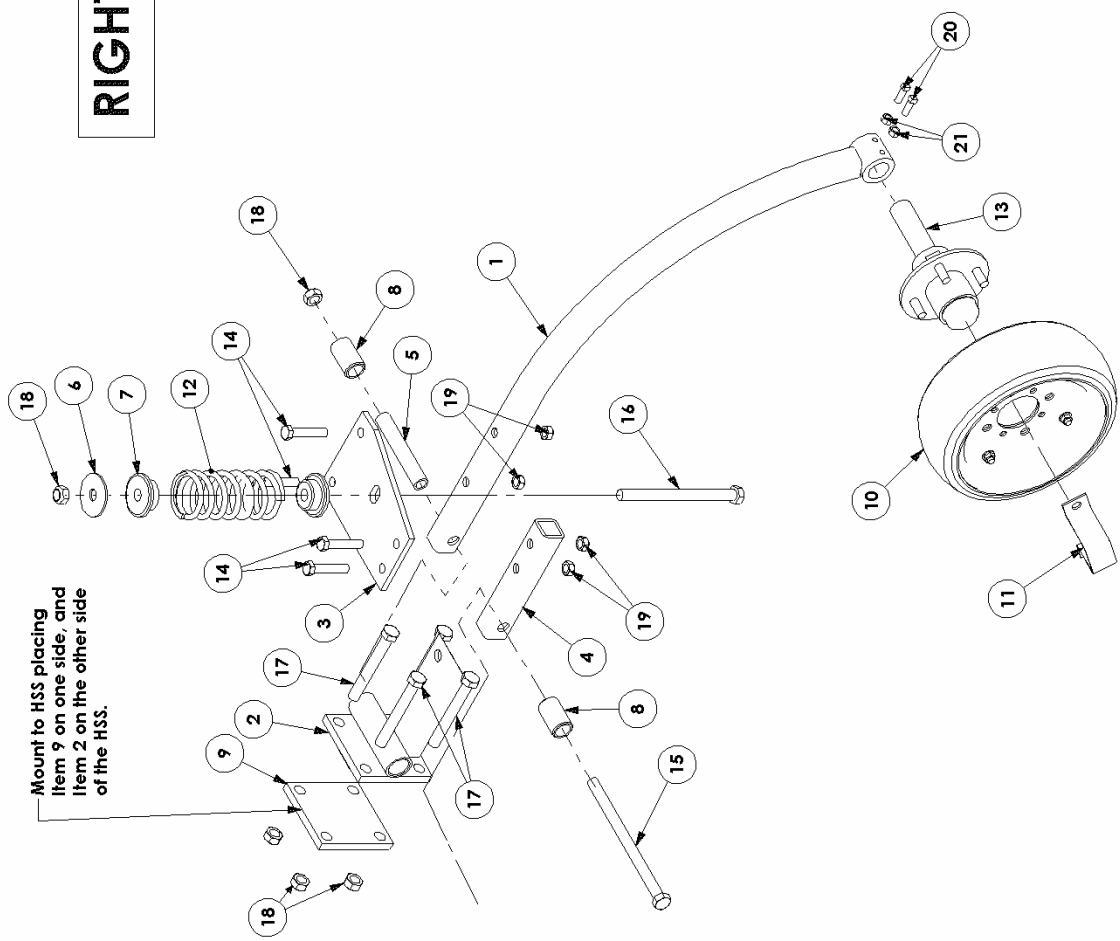
**INDEPENDANT MOUNT (SINGLE WHEEL)  
INSTALLATION INSTRUCTIONS cont...**

13. Adjust Packing Wheel to line up with the center of your opener that will be cutting open the soil. Once in the correct position, tighten the 2 - 3/8" x 1" Set Screws. Once they are tight, tighten the 3/8" Hex Nuts also. This will avoid the Set screws from becoming loose. Packer position is hard to judge as this point, and can be finely tuned by running a test pass with the tractor in the ground.
14. Double Check to make sure that all Bolts are tightened to their appropriate torque values.



3 Views  
Scale 1:16

**RIGHT**



NOTES:

21	2	HN38PLC5	HEX NUT, 3/8
20	2	SETSCRM, 3/8 x 1	
19	4	CN12PL	CLEAVE NUT, 1/2
18	6	CN58PL	CLEAVE NUT, 5/8
17	4	HH585PLC5	HEX BOLT, 5/8 x 5
16	1	HH588PLC5	HEX BOLT, 5/8 x 8
15	1	HH58912PLC5	HEX BOLT, 5/8 x 9 1/2
14	4	HH12212PLC5	HEX BOLT, 1/2 x 2 1/2
13	1	110821	SPINDLE
12	1	110820	SPRING
11	1	6813	Packer Cap Retainer
10	1	7940	4" PACKER WHEEL ASSEMBLY
9	1	6770	Packer Backing Plate - 3x3 HSS
8	2	6569	PLASTIC BUSHING 1.27" X 0.938"
7	2	6702	SPRING GUIDE
6	1	6701	Spring Retainer Washer
5	1	6697	PIVOT
4	1	6695.2	PACKER BRACE
3	1	6695	PACKER PLATE
2	1	6767	Gang Mount Packer Mount
1	1	6699	PACKER ARM
ITEM	QTY.	PART NO.	DESCRIPTION

**PARTS LIST**

THIS DRAWING IS THE PROPERTY OF:

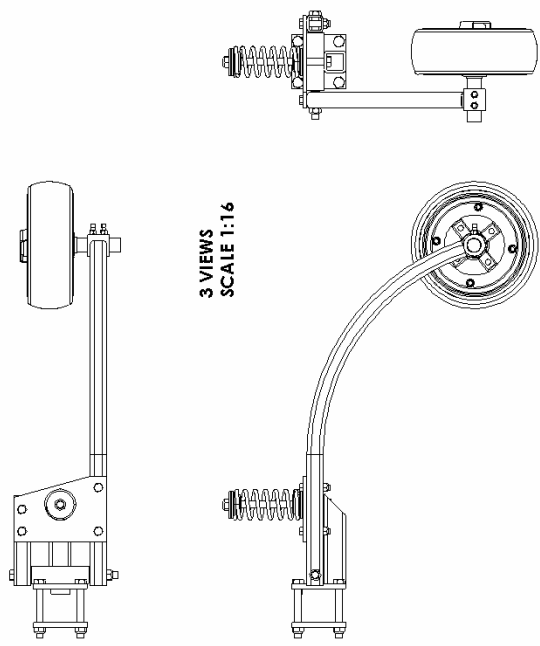
**DUTCH INDUSTRIES LIMITED**

ALL RIGHTS RESERVED

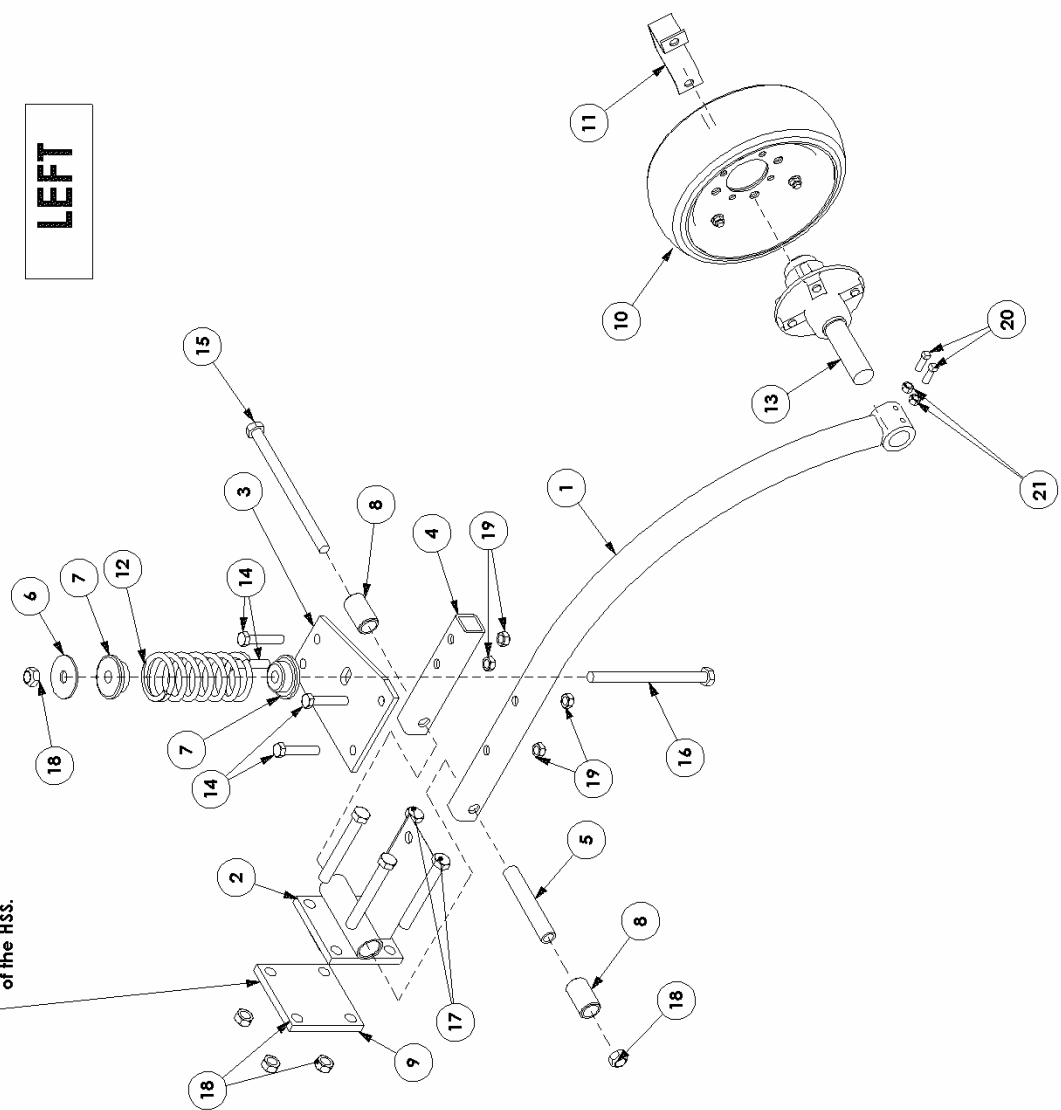
DRAWN BY: BC	DESCRIPTION: Gang Mount Incl. Packer - Right
DATE CREATED: JUN 07/02	MATERIAL: As Per BOM
TOLERANCES: ±1/16"	PROCESS: Assembly
SCALE: 1:10	<b>PART #: 6766</b>

**LEFT**

Mount to HSS placing item 9 on one side, and item 2 on the other side of the HSS.



3 VIEWS  
SCALE 1:16



21	2	HN38PLC5	HEX NUT, 3/8
20	2	SETSCREW, 3/8 x 1	
19	4	CN12PL	CLEAVE NUT, 1/2
18	6	CN58PL	CLEAVE NUT, 5/8
17	4	HH585PLC5	HEX BOLT, 5/8 x 5
16	1	HH588PLC5	HEX BOLT, 5/8 x 8
15	1	HH58912PLC5	HEX BOLT, 5/8 x 9 1/2
14	4	HH12212PLC5	HEX BOLT, 1/2 x 2 1/2
13	1	110821	SPINDLE
12	1	110820	SPRING
11	1	6813	Packer Cap Retainer
10	1	7940	4" PACKER WHEEL ASSEMBLY
9	1	6770	Packer Backing Plate - 3x3 HSS
8	2	6569	PLASTIC BUSHING 1.27"X0.938"
7	2	6702	SPRING GUIDE
6	1	6701	Spring Retainer Washer
5	1	6697	PIVOT
4	1	6695.2	PACKER BRACE
3	1	6695	PACKER PLATE
2	1	6767	Gang Mount Packer Mount
1	1	6699	PACKER ARM
ITEM	QTY.	PART NO.	DESCRIPTION

**PARTS LIST**

THIS DRAWING IS THE PROPERTY OF:

**DUTCH INDUSTRIES LIMITED**

ALL RIGHTS RESERVED

DRAWN BY: BC	DESCRIPTION: Gang Mount ind. Packer - Left
DATE CREATED: JUN 07/02	MATERIAL: As Per BOM
TOLERANCES: ±1/16"	PROCESS: Assembly
SCALE: 1:10	<b>PART #: 6765</b>

# **GANG MOUNT ( WHEEL) INSTALLATION INSTRUCTIONS**

**Refer to Page 14 unless otherwise noted**

1. The instructions below are for the 2" packer wheel assembly at 8" Spacings. An example of a 4" model is shown on page 15. The assembly of all of the different models is very similar, therefore these instructions may be used to assemble all models of the Dutch Packer Wheel System.
2. Slide the packer washer (Item 5), Packer Wheel (Item 2), Packer Bushing (Item 3), and Outer Spacer (Item 7) onto Threaded Rod (Item 8).
3. Push Center Frame Spacer (Item 6) between the flat bars of the Packer Assembly (Item 1).
4. Slide the bolt (Item 8) with the other components on it through the Packer Assembly (Item 1) and the Center Frame Spacer (Item 1).
5. Slide the Outer Spacer (Item 7), Packer Bushing (Item 3), Packer Wheel (Item 2), and Packer Washer (Item 5) onto the bolt (Item 8).
6. Tighten to proper torque specifications with cleave nut (Item 4).
7. Now refer to Page 16 for instructions on how to install Gang Mount Bar.
8. Before you start be sure to carefully plan out where you need to install your Gang mount bars. This will save a lot of time once you start assembling, as you will not have to move these brackets around.

Note: On sections over 14ft, and additional Gang Mount Arm is required (Part# 5352)

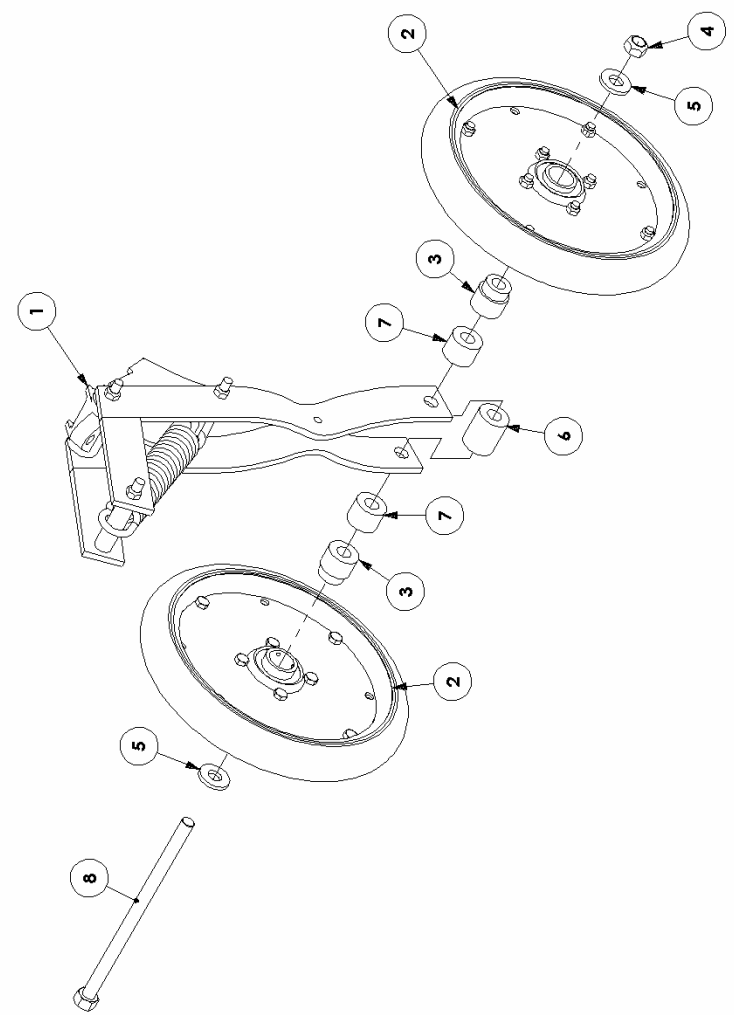
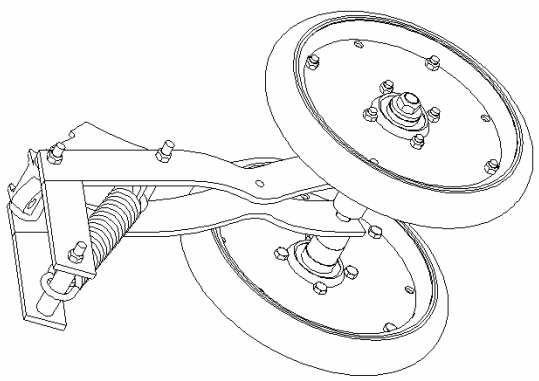
9. Bolt Long Sleeve Mount (Item 1) to an HSS cross member on your toolbar, at the measurement that you have predetermined. Do this using the clamping bracket (Item 2), 7/8" x 2 1/2" Hex Bolts (Item 11), and 7/8" Cleave Nuts (Item 12).
10. Slide the adjustable long arm (Item 3) into the Long Sleeve Mount (Item 1). Hold it in place by putting a 1/2" x 4" hex bolt (Item 10) through Item 1 and Item 3. This can be adjusted later.
11. Slide the Height Adjustment Bar (Item 4) into the Adjustable Long Arm (Item 3). Hole it in place by putting a 1/2" x 4" hex bolt (Item 10) through Item 3 and Item 4.
12. Clamp the Packer Mounting Bar (Item 6) to the Height Adjustment Bar (Item 4). Use the Adjustment Plate (Item 5), 1/2" x 5" hex bolts (Item 7), 1/2" lock washers (Item 8), and 1/2" hex nuts (Item 9).

**GANG MOUNT ( WHEEL)  
INSTALLATION INSTRUCTIONS cont...**

13. Adjust Height of packing bar by sliding Item 4 up and down. Once the desired height is achieved, tighten the ½" x 4" hex bolt (Item 10), ½" lock washer (Item 8) and ½" hex nut (Item 9)
14. Adjust Length of packing bar by sliding Item 3 in and out. Once the desired height is achieved, tighten the ½" x 4" hex bolt (Item 10), ½" lock washer (Item 8) and hex nut (Item 9)
15. Now refer to Page 17 for instructions on how to install the Packer Wheels to the Gang Mount Arm.
16. Position Packer Assembly (Item 2) up to the Gang Mount HSS.
17. Slide U-Bolt (Item 3) into top and bottom hole in the Packer Assembly (Item 2).
18. Screw ½" cleave nuts (Item 4) onto U-Bolt Threads. Do not tighten yet.
19. Once all of the packer wheel assemblies are on the HSS loosely, line the packer wheels up with the shanks on your toolbar.
20. Tighten all bolts to the proper torque specifications.

**Gang Mount Kits**

<b>Part # of Kit</b>	<b>Description of Kit</b>
	2" Dual Packer - 2 - 2" x 13" Wheels
60011	6" Wheel Spacing
60012	7" Wheel Spacing
60013	8" Wheel Spacing
60014	9" Wheel Spacing
60015	10" Wheel Spacing
60016	11" Wheel Spacing
60017	12" Wheel Spacing
	4" Dual Packer - 4" - 4" x 12" Wheels
60025	6" Wheel Spacing
60026	7" Wheel Spacing
60027	8" Wheel Spacing
60028	9" Wheel Spacing
60029	10" Wheel Spacing
60030	11" Wheel Spacing
60031	12" Wheel Spacing



ITEM	QTY.	PART NO.	DESCRIPTION
8	1	60059	Threaded Rod - 11 3/4" - For 8"
7	2	60050	1 1/8" Spacer
6	1	60042	Btm Frame Spacer-1 7/8"-Painted
5	2	60056	Packer Washer
4	1	CN58FL	CLEAVE NUT - 5/8
3	2	60055	Packer Bushing
2	2	60068	2" Single Wheel Packer Assm.
1	1	60116	2" Double Packer Ass'y - No Wheel

**PARTS LIST**

THIS DRAWING IS THE PROPERTY OF:

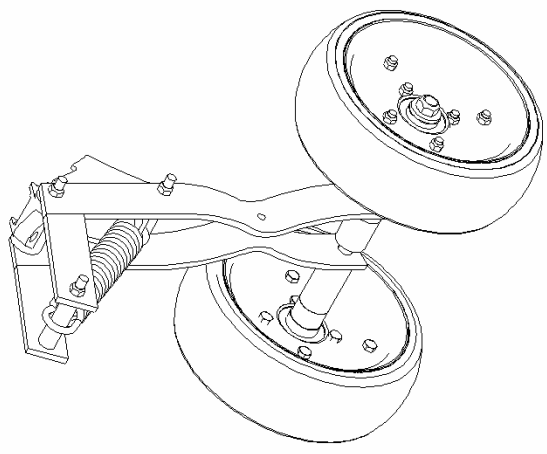
**DUTCH INDUSTRIES LIMITED**

ALL RIGHTS RESERVED

DRAWN BY: BC	DESCRIPTION: 2" Double Wheel Packer - 8" Sp.
DATE CREATED: NOV 01/02	MATERIAL: As Per BOM
TOLERANCES: ±1/16"	PROCESS: Assemble
SCALE: 1:8	<b>PART #: 60013</b>

NOTES:



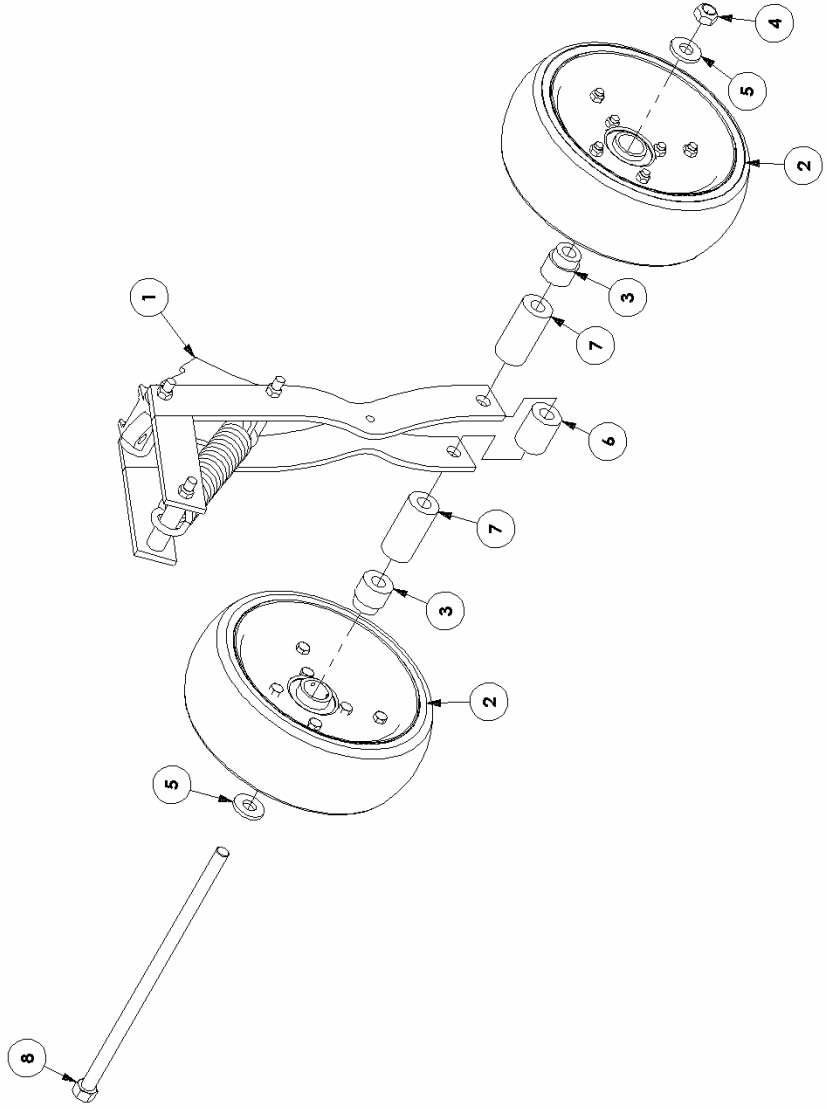


ITEM	QTY.	PART NO.	DESCRIPTION
8	1	60063	Threaded Rod - 15 3/4" - For 12"
7	2	60054	3 1/8" Spacer
6	1	60042	Botm Frame Spacer-1 7/8"-Painted
5	2	60056	Packer Washer
4	1	CN58PL	CLEAVE NUT - 5/8
3	2	60055	Packer Bushing
2	2	60069	4" Single Packer Wheel Assm.
1	1	60116	2" Double Packer Assy - No Wheel

**PARTS LIST**  
 THIS DRAWING IS THE PROPERTY OF:  
**DUTCH INDUSTRIES LIMITED**  
 ALL RIGHTS RESERVED

DRAWN BY: BC  
 DATE CREATED: APR 04/02  
 TOLERANCES: ±1/16"  
 SCALE: 1:8

DESCRIPTION: 4" Double Wheel Packer - 12" Sp.  
 MATERIAL: As Per BOM  
 PROCESS: Assemble  
**PART #: 60031**

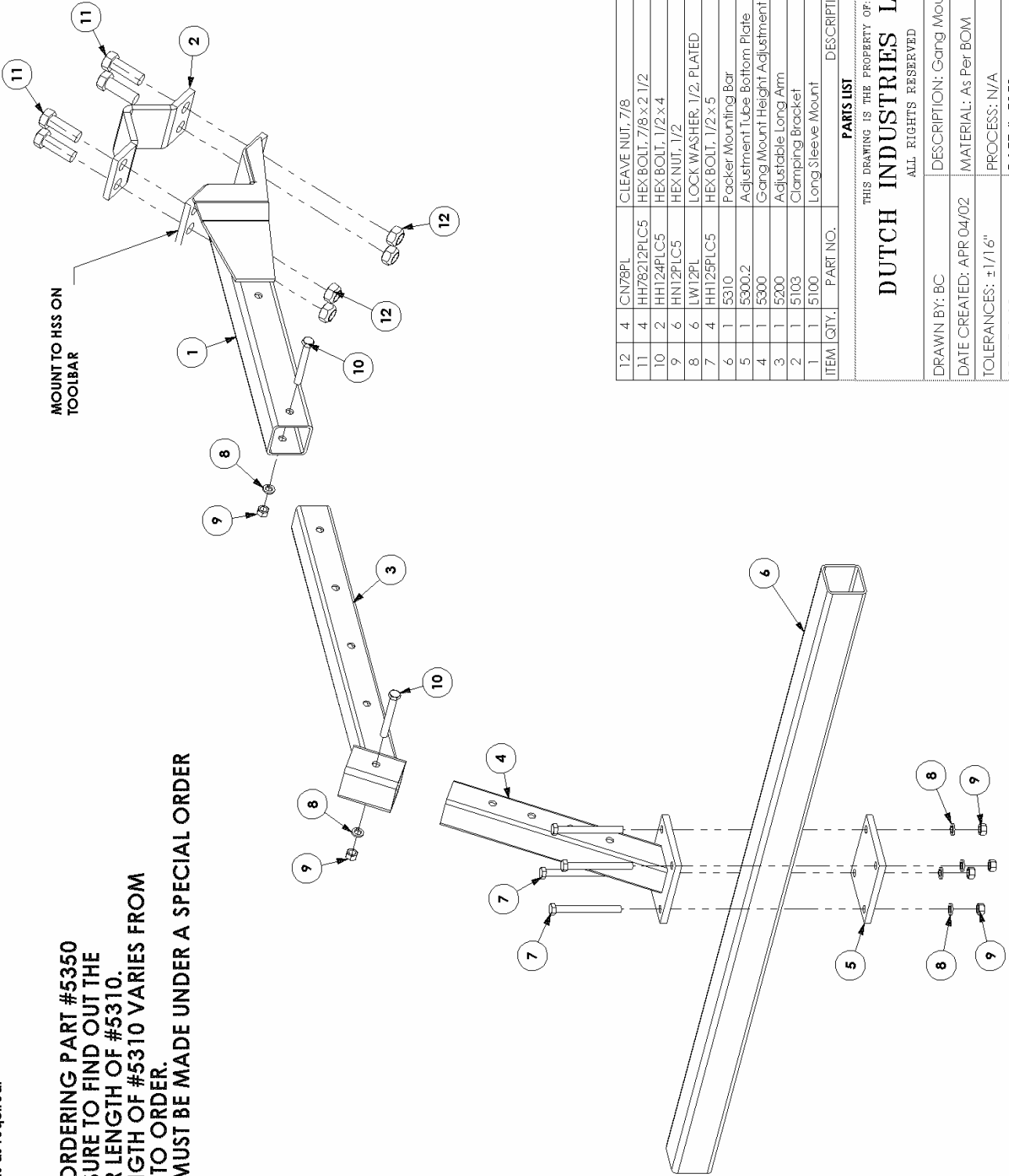


NOTES:

**NOTES:**

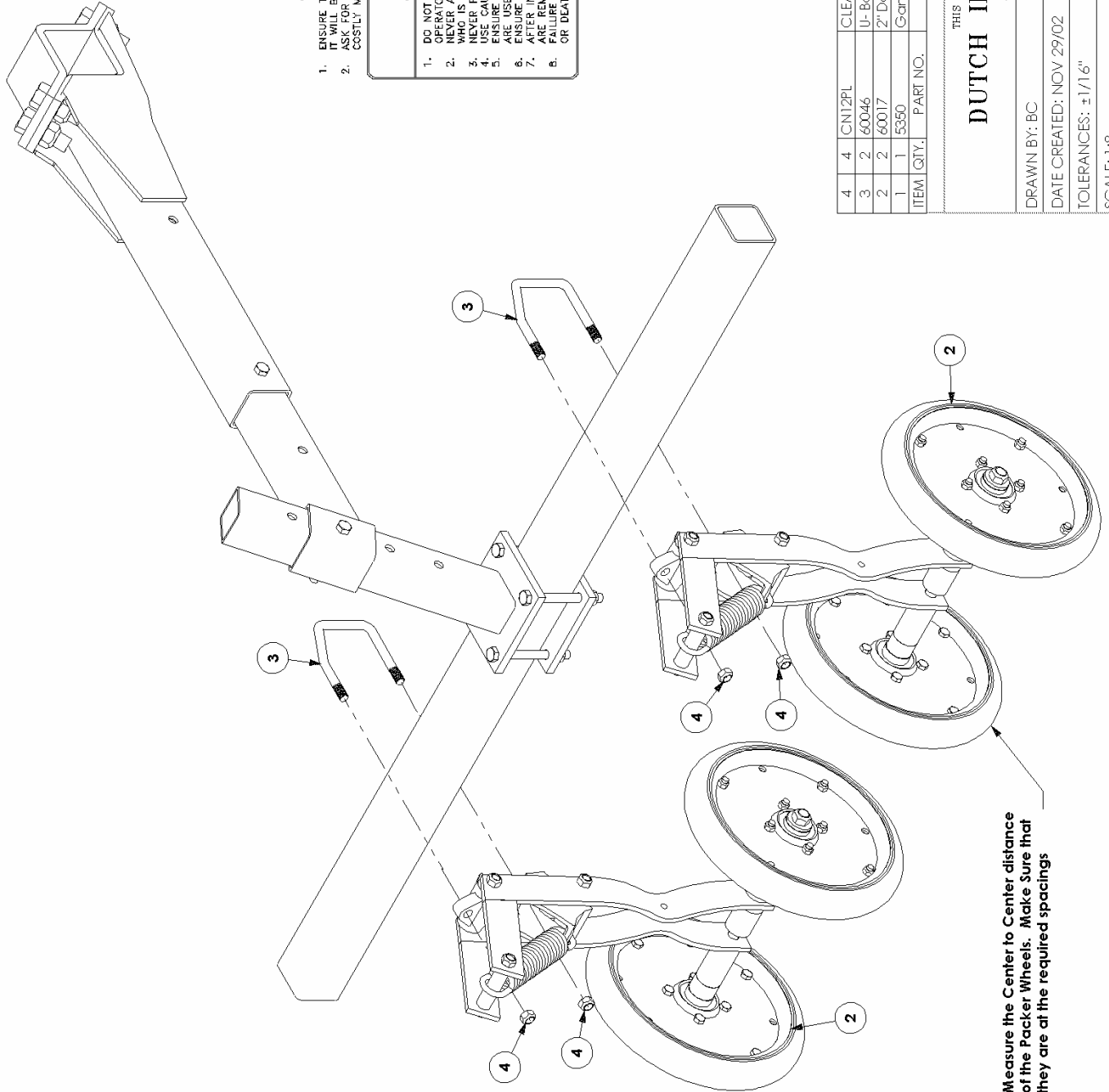
1. Packer Assembly is to be sandblasted and finish painted a black gloss.
2. Gangmount height adjustment ass ys are to be centered on the mounting arm.  
Space arms as required.

**WHEN ORDERING PART #5350  
MAKE SURE TO FIND OUT THE  
PROPER LENGTH OF #5310.  
THE LENGTH OF #5310 VARIES FROM  
ORDER TO ORDER.  
#5310 MUST BE MADE UNDER A SPECIAL ORDER**



ITEM	QTY.	PART NO.	DESCRIPTION
12	4	CN78PL	CLEAVE NUT, 7/8
11	4	HH78212PLC5	HEX BOLT, 7/8 x 2 1/2
10	2	HH124PLC5	HEX BOLT, 1/2 x 4
9	6	HN12PLC5	HEX NUT, 1/2
8	6	LW12PL	LOCK WASHER, 1/2, PLATED
7	4	HH125PLC5	HEX BOLT, 1/2 x 5
6	1	5310	Packer Mounting Bar
5	1	5300.2	Adjustment Tube Bottom Plate
4	1	5300	Gang Mount Height Adjustment
3	1	5200	Adjustable Long Arm
2	1	5103	Clamping Bracket
1	1	5100	Long Sleeve Mount

PARTS LIST	
THIS DRAWING IS THE PROPERTY OF:	
<b>DUTCH INDUSTRIES LIMITED</b>	
ALL RIGHTS RESERVED	
DRAWN BY: BC	DESCRIPTION: Gang Mount Packer Assembly
DATE CREATED: APR 04/02	MATERIAL: As Per BOM
TOLERANCES: ±1/16"	PROCESS: N/A
SCALE: 1:10	<b>PART #:</b> 5350



NOTES:

# CAUTION

1. ENSURE THAT THIS PRODUCT IS COMPATIBLE WITH THE EQUIPMENT IT WILL BE MOUNTED ON OR POWERED BY.
2. ASK FOR APPROVAL PROCEDURES FROM YOUR DEALER TO AVOID COSTLY MISTAKES OR VOIDING OF YOUR WARRANTIES.

# WARNING

- DO NOT OPERATE THIS UNIT UNLESS YOU HAVE READ THE OPERATORS MANUAL.
2. NEVER ALLOW THIS PRODUCT TO BE HANDLED BY ANYONE WHO IS UNFAMILIAR TO THE OPERATIONS OF THIS UNIT.
  3. WEAR PROPER CLOTHING AND SAFETY EQUIPMENT.
  4. USE CAUTION WHEN WORKING WITH HEAVY OR SHARP OBJECTS.
  5. ENSURE THAT PROPER CLOTHING, TOOLS AND EQUIPMENT ARE USED WHEN HANDLING THIS UNIT.
  6. ENSURE THAT ALL HARDWARE IS FASTENED PROPERLY.
  7. AFTER INSTALLATION, ENSURE THAT ALL TOOLS AND PARTS ARE REMOVED BEFORE OPERATION OF THIS UNIT.
  8. FAILURE TO FOLLOW SAFETY RULES MAY RESULT IN INJURY OR DEATH.

ITEM	QTY.	PART NO.	DESCRIPTION
4	4	CN12PL	CLEAVE NUT, 1/2
3	2	60046	U-Bolt- Gang Mount Packers
2	2	60017	2" Double Wheel Packer - 12" Sp.
1	1	5350	Gang Mount Packer Assembly

**PARTS LIST**

THIS DRAWING IS THE PROPERTY OF:

## DUTCH INDUSTRIES LIMITED

ALL RIGHTS RESERVED

DRAWN BY: BC      DESCRIPTION: Gang Mount Packer Inst. Sheet

DATE CREATED: NOV 29/02      MATERIAL: N/A

TOLERANCES: ±1/16"

SCALE: 1:8      PROCESS: N/A      **PART #: 601121**

## **WARRANTY**

**DUTCH INDUSTRIES LIMITED WILL WARRANT EACH NEW DUTCH PACKER WHEEL SYSTEM TO BE FREE FROM FACTORY DEFECTS IN MATERIAL AND WORKMANSHIP FOR ONE YEAR FROM THE DELIVERY DATE BY THE DEALER TO THE ORIGINAL PURCHASER.**

**THIS WARRANTY PREVAILS ONLY IF THE UNIT IS SET UP AND OPERATED IN ACCORDANCE WITH FACTORY INSTRUCTIONS AND NORMAL USE AND SERVICE.**

**DUTCH INDUSTRIES LTD.'S OBLIGATION UNDER THIS WARRANTY IS LIMITED TO SUPPLYING REPLACEMENT PARTS IN EXCHANGE FOR ANY PARTS WHICH ARE DEFECTIVE DUE TO FACTORY WORKMANSHIP OR MATERIAL. ALL DEFECTIVE PARTS MUST BE SENT TO DUTCH INDUSTRIES LTD. FOR WARRANTY EXAMINATION.**

**THE WARRANTY REGARDING PARTS PURCHASED BY DUTCH INDUSTRIES LTD, FOR USE ON DUTCH IND. PRODUCTS, IS DEPENDANT ON THE VENDORS WARRANTY.**

**THIS WARRANTY IS VOID ON ANY UNIT WHICH HAS BEEN TAMPERED WITH OR WHICH HAS BEEN SUBJECT TO MISUSE, NEGLIGENCE, OR ACCIDENT, OR WHICH HAS HAD THE SERIAL NUMBER TAMPERED WITH OR REMOVED.**

## **IMPORTANT NOTICE**

**WHILE EVERY PRECAUTION HAS BEEN TAKEN IN THE PREPARATION OF THIS MANUAL, DUTCH INDUSTRIES ASSUMES NO RESPONSIBILITY FOR INACCURACIES OR OMISSIONS. NO RESPONSIBILITY IS ASSUMED FOR DAMAGES RESULTING FOR THE USE OF THE INFORMATION CONTAINED WITHIN. DUTCH INDUSTRIES RESERVES THE RIGHT TO CHANGE AND IMPROVE ITS PRODUCTS AS IT SEES FIT. THIS MANUAL DESCRIBES THE CONDITION OF THIS PRODUCT AT THE TIME OF ITS PRINTING, AND MAY NOT REFLECT THE PRODUCT AT ALL TIMES IN THE FUTURE.**

**ALL RIGHTS RESERVED. NO PART OF THIS PUBLICATION MAY BE REPRODUCED, STORED IN A RETRIEVAL SYSTEM, OR TRANSMITTED, IN ANY FORM OR BY ANY MEANS, ELECTRONIC, MECHANICAL, PHOTOCOPYING, RECORDING, OR OTHERWISE WITHOUT THE PRIOR WRITTEN PERMISSION OF THE PUBLISHER.**

**COPYRIGHT, 2002, DUTCH INDUSTRIES LTD.**