

INSTALLATION

It is recommended to assemble the tip onto the body before installing it on the shank, and install this assembly onto the shank before you attach the fertilizer tube. This will allow you to use an impact wrench to install your openers making assembly quicker and easier.

- Refer to the diagram below to see the install locations of the tip, fertilizer tube, and other hardware.
- Ensure that the fertilizer tube is installed on the correct side of the mounting tab, located on the body, so the tube is centered to the body.
- Install the tip as per the orientation on the diagram and with the writing upright.
- Use an impact wrench if possible to tighten the shank bolts during the initial install and torque them 120 ft-lb. After 4 hours of use, it is recommended that you ensure all bolts are still tight and re-torque to 120 ft-lb. This should prepare you for the season.
- Dutch lock nuts have been provided which have a stainless steel insert as opposed to the synthetic insert found in common lock nuts. This will help keep your hardware in place through any condition more effective than a standard lock nut.
- When running sideband openers, you will require an equal number of left and right openers, unless your machine is equipped with an odd number of shanks. When seeding on hill sides, it is recommended that left openers should be installed on the left side of the drill and right openers should be installed on the right side of the drill. This will ensure that your drill runs true. If farming on relatively flat land, the tips can be installed with the left openers on the right side and the right openers on the left side of the drill. This will also ensure the drill runs true and prevents plugging while the drill is turning.

CONTACT DETAILS

HEAD OFFICE

Dutch Openers
P.O. Box 568-500 Portico Drive
Pilot Butte, SK Canada SOG 3Z0
sales@dutchopeners.com
www.dutchopeners.com

1.800.663.8824
1.800.66.DUTCH
1.306.781.4820
Fax 306.781.4877



CANADIAN AGRICULTURAL TERRITORY MANAGERS

Northern Alberta & British Columbia
Chris Lupul
Cell 780.632.1919
clupul@dutchopeners.com

Southern Alberta
Terence Peatman
Cell 403.501.1998
tpeatman@dutchopeners.com

Northern Saskatchewan & Northern Manitoba
Connor Bohachewski
Cell 306.921.7715
cbohachewski@dutchopeners.com

Southern Saskatchewan & Southern Manitoba
Andrew Sanderson
Cell 306.551.7171
asanderson@dutchopeners.com

USA AGRICULTURAL TERRITORY MANAGERS

USA Eastern
Tom Wible (ND, SD, MT, NE, MN, WI)
Cell 605.360.4385
twible@dutchopeners.com

USA Western
Terence Peatman (WA, OR, ID)
Cell 403.501.1998
tpeatman@dutchopeners.com

AUSTRALIA DISTRIBUTOR

Beulah Machinery
AU 02 6341 3270
dutch@beulahmachinery.com.au
www.beulahmachinery.com.au

FRANCE DEALER

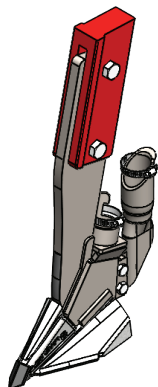
Kiwi Agronomy SAS
FR +33 (0)6.2.76.69.06
kiwiagronomy@gmail.com
www.kiwiagronomy.fr/shop

UK DEALERS

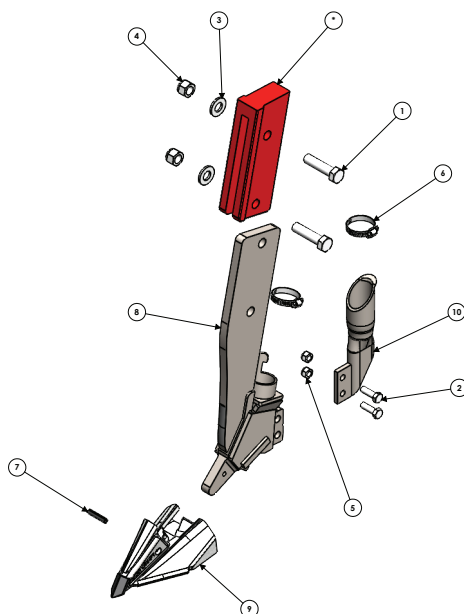
Pan Anglia Ltd.
UK 01787 242740
sales@pananglia.com
www.pananglia.com

Spaldings Ltd.
UK 01522 500600
agsales@spaldings.co.uk
www.spaldings.co.uk

ASSEMBLED VIEW



EXPLODED VIEW



PART LIST

ITEM	QTY.	PART NO.	DESCRIPTION
10	1	4305	INDEPENDENT GRAN FERT TUBE ASS'Y
9	1	2718	3" - 3/8" Sep. Universal Tip
8	1	4135	Universal Body for Morris Contour 2
7	1	RP14114	ROLL PIN, 1/4 x 1 1/4
6	2	HC16	#16 Hose Clamp
5	2	LN516C	LOCK NUT, 5/16
4	2	LN12C	LOCK NUT, 1/2
3	2	111015	SAE FLAT WASHER, 1/2
2	2	HH5161PLC5	HEX BOLT, 5/16 x 1
1	2	HH122PLC5	HEX BOLT, 1/2 x 2

This information is made available to the public by Dutch Openers solely as a guide for the installation of openers. Dutch Openers Ltd. assumes no legal liability or responsibility for the accuracy, completeness, or usefulness of any information contained in this document and as a result holds no legal liability or responsibility for damages or losses resulting from the use of this information. Dutch Openers reserves the right to change and improve its products as seen fit. This information describes the condition of this product at the time of its printing and may not reflect the product at all times in the future.